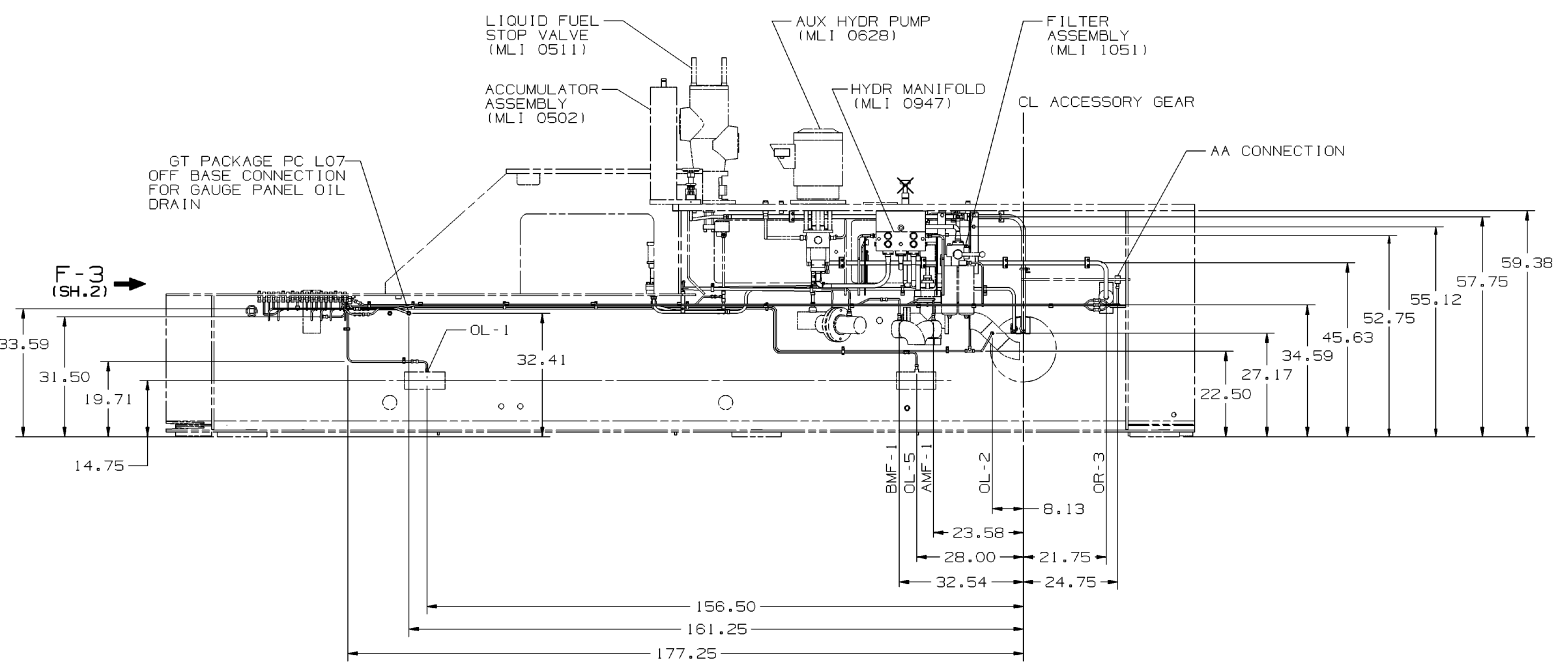



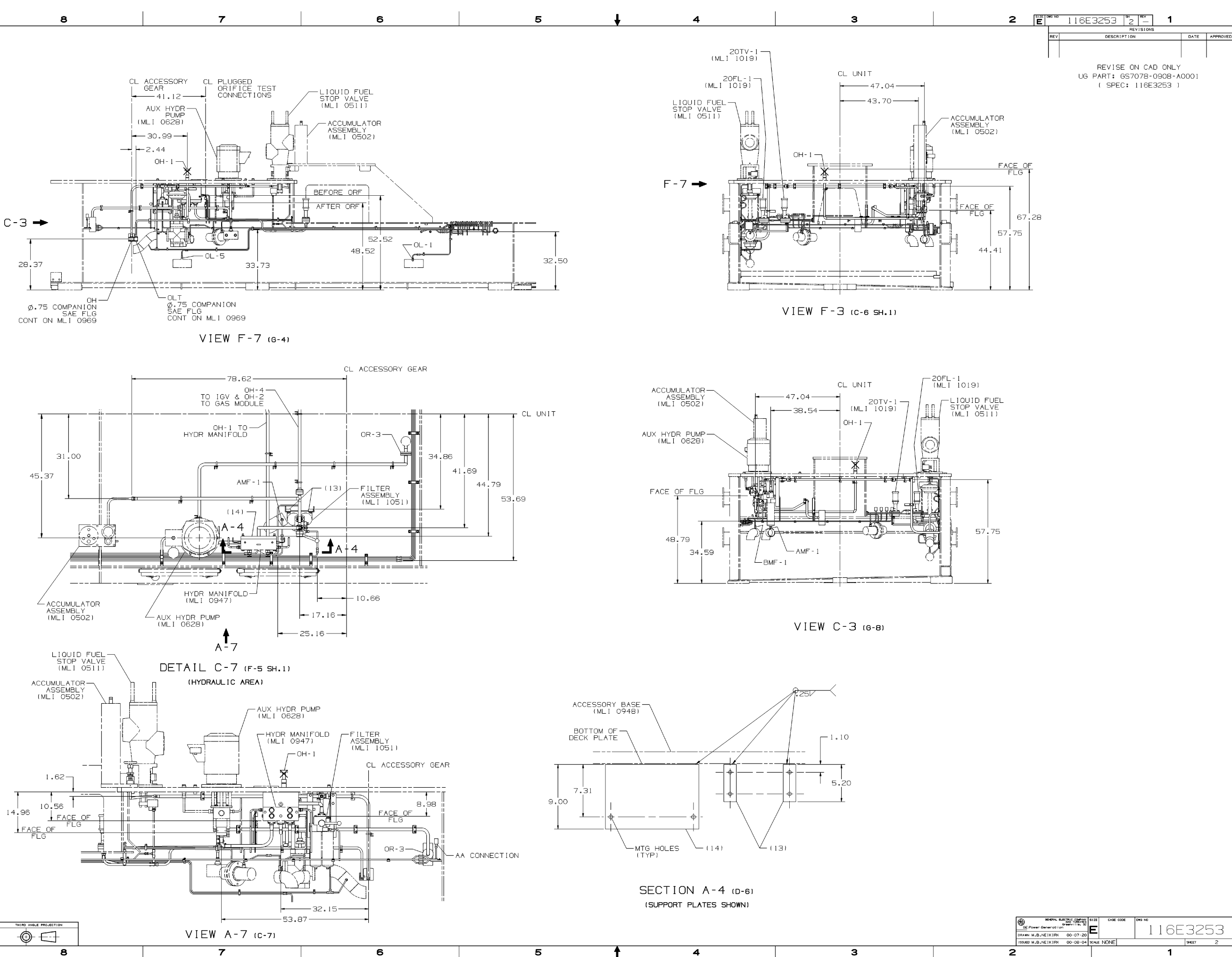
REVIEWS			
REV	DESCRIPTION	DATE	APPROVED
A	MP61582 MADE CORRECTIONS PER DCI-00008139. M.B. NEIKIRK 00-08-07	00-08-07 M.B. NEIKIRK	LGM TAG
B	AN 00023004, OCR F09201 & Y03151; GENL CHG TO SHEETS 1, 3 & 4 TERESA MILLWOOD	00-12-04	LDK TAG

- [illegible]



- | | | |
|-----|-------------------------|----------|
| 7 | HYDRO TEST, LUBE OIL PP | 362A2490 |
| 6 | INSTRUCTIONS, TEST - PP | 362A1310 |
| 5 | TUBE & FITTINGS ASSY | 215A4435 |
| 4 | WELDING - GENERAL SPEC | P8A-AG1 |
| 3 | WELDING - PIPING SPEC | P8A-AG3 |
| 2 | PIPING PRACTICES | 351A3700 |
| 1 | APPLIED PRACTICES | 348A9200 |
| IT. | NOMENCLATURE | IDENT |
- LIST OF COMPLEMENTARY DOCUMENTS

UNLESS OTHERWISE SPECIFIED		SIGNATURES		DATE		GENERAL ELECTRIC COMPANY Greenville, SC	
DIMENSIONS ARE IN INCHES		BROWN, M.B., NIEL, R.K.		00-07-20		 GE Power Generation PIPING ARR. CONTROL OIL- INTERNAL FIRST MADE FOR ML-7A1PEAL-15 0906 SIZE CHSR CODE E DWG NO 116E3253 SCALE NONE SHEET 1	
TOLERANCES ON		DRAINED L.G., MCABEE		00-08-04			
2 R. DECIMALS =		CHOPIN, T.A., GARRETT		00-08-04			
3 R. DECIMALS =		ISSUED M.B., NIEL, R.K.		00-08-04			
ANGLES =		D.C., R.C., NIEL		00-08-04			
FRACTIONS =							
APPLIED PRACTICES 3489/200		DIM TOL		116E3084			



REV		DESCRIPTION	DATE	APPROVED
1	2			

REVISE ON CAD ONLY
UG PART: GS7078-0908-A0001
(SPEC: 116E3253)

116E3253	2	1
116E3253	2	1

8

7

6

5

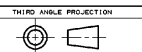
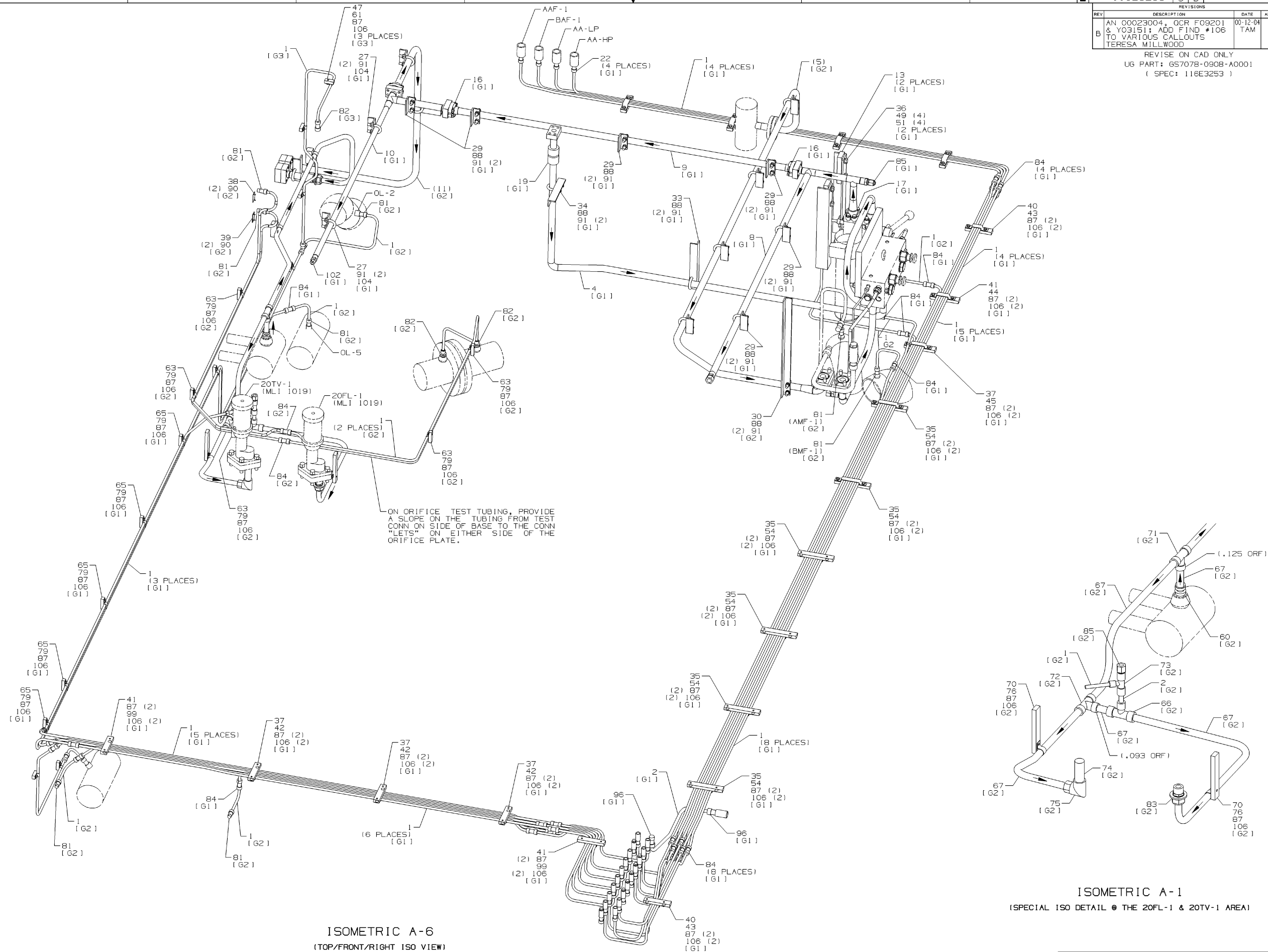
4

3

2

1

REV		DESCRIPTION	DATE	APPROVED
B	AN 00023004, OCR F09201 & Y03151; ADD FIND #106 TO VARIOUS CALLOUTS	00-12-04	LDK	
	TERESA MILLWOOD	TAM	TAG	
REVISE ON CAD ONLY				
UG PART: 657078-0908-A0001				
(SPEC: 116E3253)				



REV		DESCRIPTION	DATE	APPROVED
B	AN 00023004, OCR F09201 & Y03151; ADD FIND #106 TO VARIOUS CALLOUTS	00-12-04	LDK	
	TERESA MILLWOOD	TAM	TAG	
REVISE ON CAD ONLY				
UG PART: 657078-0908-A0001				
(SPEC: 116E3253)				

8

7

6

5

4

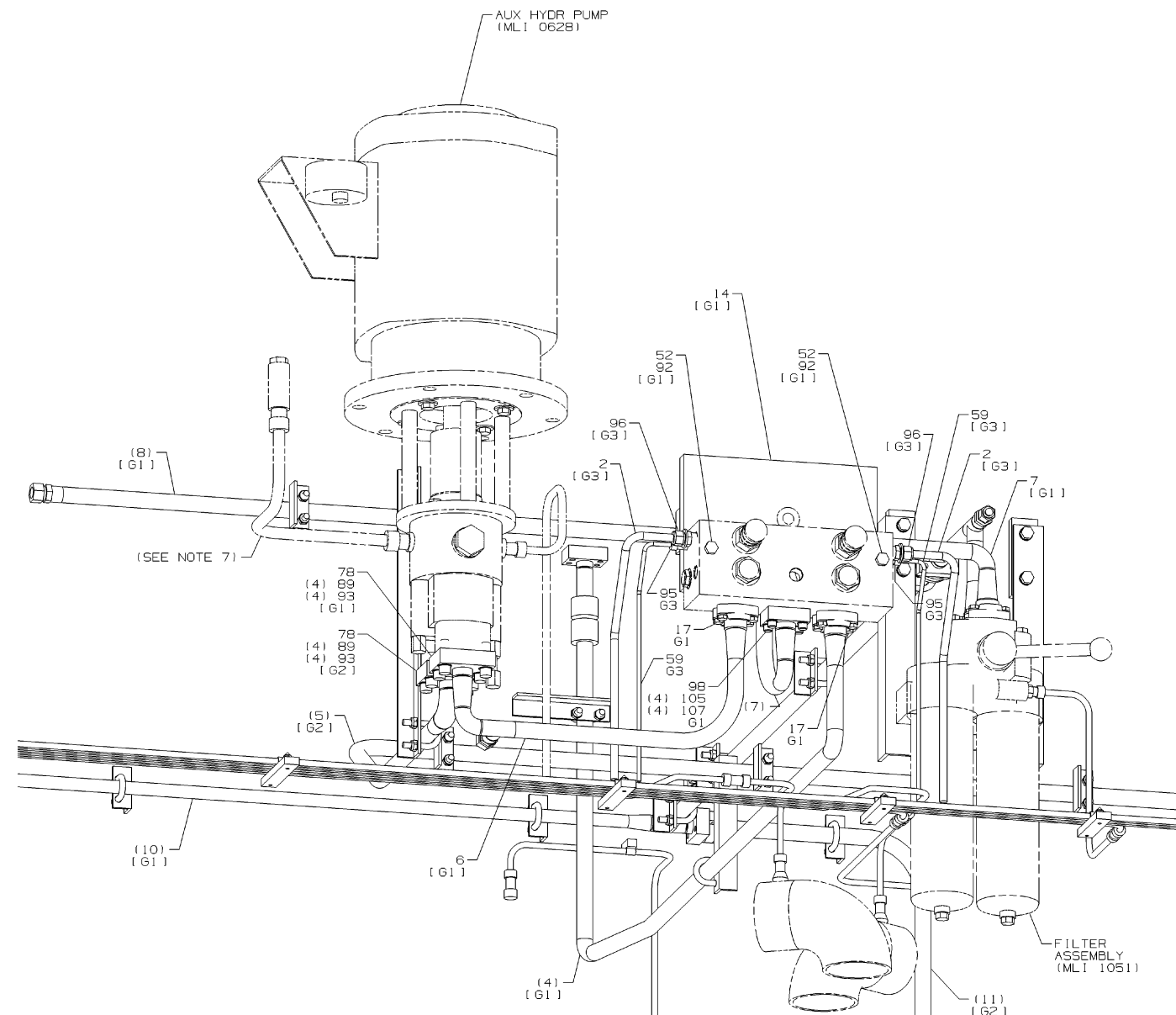
3

2

1

TYPE	DES NO	REV	DATE
E	116E3253	5	
REVISIONS			
REV	DESCRIPTION	DATE	APPROVED

REVISE ON CAD ONLY
UG PART: GS7078-0908-A0001
(SPEC: 116E3253)



ISOMETRIC A-5
(SPECIAL ISO DETAIL @ THE HYDR MANIFOLD AREA)

GENERAL ELECTRIC COMPANY	SIZE	CAGE CODE	DES NO
GE Power Generation	E		116E3253
DRAWN M.B. HEIKIRK	00-07-20	SCALE NONE	SHEET 5
ISSUED M.B. HEIKIRK	00-08-04		